

Carmichael

RECREATION AND
PARK DISTRICT

Memo

To: Advisory Board of Directors

From: Mike Blondino, District Administrator
James Perry, Park Services Manager
Ingrid S. Penney, Administrative Services Manager

Date: December 19, 2019

Subject: Sutter Jensen Community Park – Garfield Access/Parking and Jensen Garden Lower Parking Lot Project

Background/Discussion:

The Advisory Board recommended approval of the Sutter Jensen Community Park – Garfield Access/Parking and Jensen Garden Lower Parking Lot Project as part of the CIP Budget for the General Fund 337A for FY2019-20. The Board of Supervisors approved and adopted the District's CIP List as part of the overall FY2019-20 budget package.

The District contracted with Bennett Engineering Services, Inc. to review and provide engineering support services for the Project. The scope of services included:

- Topographic mapping
- Design of 20' wide driveway
- Design of ADA compliant parking stall
- General grading plan for the two parking areas (Garfield and Jensen)

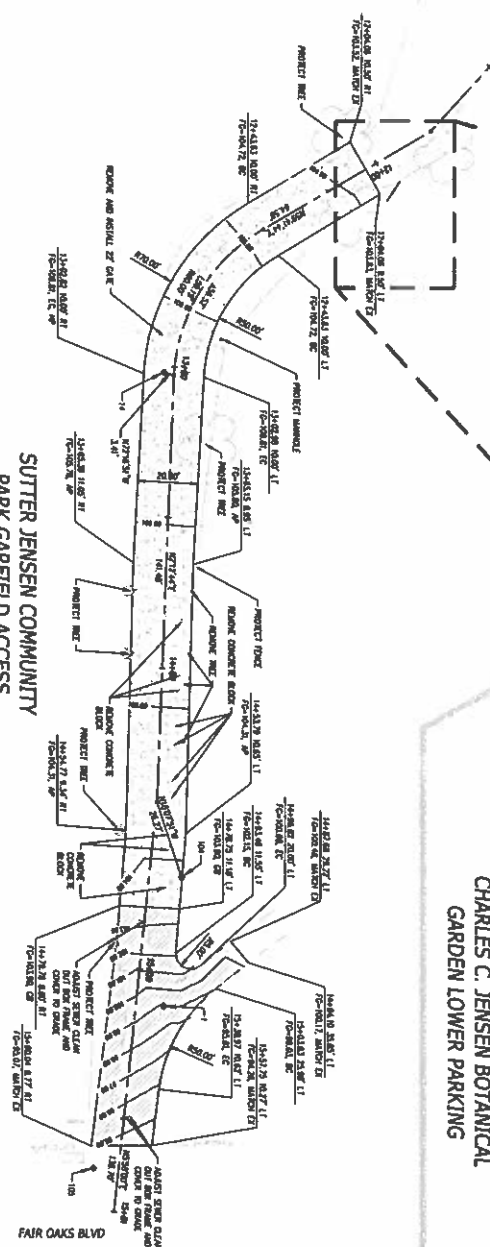
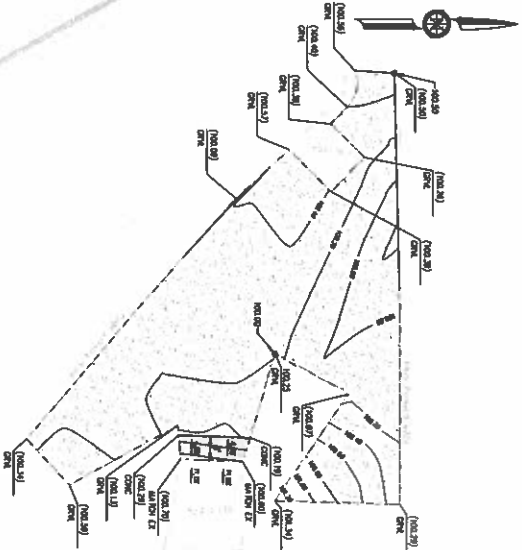
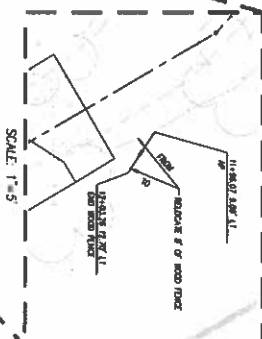
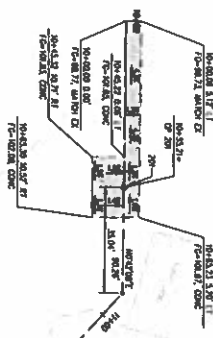
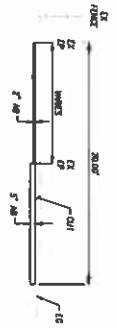
Bennett Engineering has completed the plans and specifications and cost estimates for the Project. (Attached) Cost estimates provided by Bennett total \$48k. The total amount allocated in FY2019-20 for the Project is \$73,504. The District has spent \$7,075 to date on a maximum contract of \$7,948 for engineering services, leaving approximately **\$66,000** for any remaining engineering services and the cost for construction on the Project.

Staff has requested proposals from several contractors to determine current pricing. Proposals received have been in a range of \$60,562 to \$92,000. Based on the overall cost of the Project exceeding the \$60k limit, the District will need to go out to informal bid.

In order to streamline the process, Staff recommends that the Advisory Board approve the plans and specifications and cost estimates for the Project; that they delegate authority for the District Administrator or his designee go out to informal bid and award the contract to the lowest responsible bidder within the remaining amount allocated for the Project.

RECOMMENDATION:

Staff recommends that the Advisory Board approve the plans and specifications and cost estimates for the Sutter Jensen Community Park – Garfield Access/Parking and Jensen Garden Lower Parking Lot Project; that they delegate authority to the District Administrator or his designee to go out to informal bid and award the contract to the lowest responsible bidder within the remaining budget allocation.



LEGEND:

1	10.00' x 20.00'	CONCRETE
2	11.00' x 20.00'	CONCRETE
3	12.00' x 20.00'	CONCRETE
4	13.00' x 20.00'	CONCRETE
5	14.00' x 20.00'	CONCRETE
6	15.00' x 20.00'	CONCRETE
7	16.00' x 20.00'	CONCRETE
8	17.00' x 20.00'	CONCRETE
9	18.00' x 20.00'	CONCRETE
10	19.00' x 20.00'	CONCRETE
11	20.00' x 20.00'	CONCRETE

PROJECT MEZ. - MEZZANINE
PROJECT CONC. - CONCRETE

NO.	REVISED	BY	DATE	REASON
1				
2				
3				
4				
5				
6				
7				
8				
9				
10				
11				
12				
13				
14				
15				
16				
17				
18				
19				
20				
21				
22				
23				
24				
25				
26				
27				
28				
29				
30				
31				
32				
33				
34				
35				
36				
37				
38				
39				
40				
41				
42				
43				
44				
45				
46				
47				
48				
49				
50				
51				
52				
53				
54				
55				
56				
57				
58				
59				
60				
61				
62				
63				
64				
65				
66				
67				
68				
69				
70				
71				
72				
73				
74				
75				
76				
77				
78				
79				
80				
81				
82				
83				
84				
85				
86				
87				
88				
89				
90				
91				
92				
93				
94				
95				
96				
97				
98				
99				
100				

SUTTER JENSEN COMMUNITY PARK GARFIELD ACCESS

CHARLES C. JENSEN BOTANICAL GARDEN LOWER PARKING

FAIR OAKS BLVD

NOT FOR CONSTRUCTION

BEN EN

Bennett Engineering Services
1083 Sunrise Avenue, Suite 100
Roseville, California 95661
P: 916.334.1100
F: 916.334.1180

SUTTER JENSEN COMMUNITY PARK GARFIELD ACCESS
A CHARLES C. JENSEN BOTANICAL GARDEN LOWER PARKING
LAYOUT

CAUTION

100% CONSTRUCTION COST ESTIMATE



Project Name:
Sutter Jensen Community Park Garfield Access & Charles C. Jensen Botanical Garden Lower Parking

Project No:

Location
Sutter Jensen Community Park Garfield Access & Charles C. Jensen Botanical Gar

Client Project No.

Client Name

armichael Rec & Park Distr

QTY. ORIGINATOR L.MARTINEZ	DATE 10/18/19	QTY. CHECKER J.RENTERIA	DATE 10/18/19	PRICED BY J.RENTERIA	DATE 10/18/19
--------------------------------------	-------------------------	-----------------------------------	-------------------------	--------------------------------	-------------------------

Item No.	ITEM DESCRIPTION	Estimated Quantity	Unit	Unit Price (\$/Unit)	Amount (\$)
----------	------------------	--------------------	------	----------------------	-------------

Items for East Parking Lot

1	CLASS 2 AGGREGATE BASE	52	CY	\$100.00	\$5,200.00
2	MINOR CONCRETE	180	SF	\$20.00	\$3,600.00

Items for Driveway Site

1	CLEARING AND GRUBBING	1	LS	\$2,000.00	\$2,000.00
2	EXCAVATION (UNDER AC DWY & WIDENING)	85	CY	\$80.00	\$6,800.00
3	CLASS 2 AGGREGATE BASE	92	CY	\$100.00	\$9,200.00
4	HOT MIX ASPHALT	36	TON	\$150.00	\$5,400.00
5	MINOR CONCRETE	550	SF	\$20.00	\$11,000.00

Subtotal =	\$43,200.00
Contingency @ 10 % =	\$4,320.00
Grand Total =	\$47,520.00
For Budget Purposes =	\$48,000.00

BENNETT ENGINEERING SERVICES ASSUMES NO RESPONSIBILITY FOR DIFFERENCES BETWEEN THESE QUANTITIES AND FINAL PAY QUANTITIES.